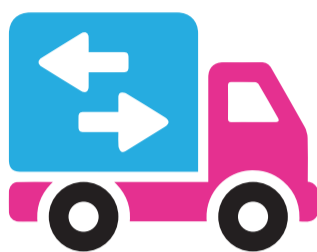
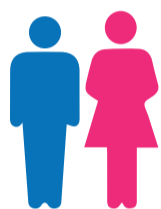




MOVING TO A DIFFERENT RESIDENCE



17% 120 PEOPLE HAD MOVED TO A DIFFERENT RESIDENCE BETWEEN WAVE 1 AND WAVE 2.



MORE WOMEN (55%) MOVED THAN MEN (45%).

MORE PEOPLE WITH MODERATE ID MOVED.

60% OF PEOPLE MOVED TO A HOME THAT WAS SIMILAR TO THE PLACE WHERE THEY LIVED AT WAVE 1. (LATERAL)

45% NEARLY HALF OF THE MOVERS

26% PEOPLE MOVED TO THE COMMUNITY SETTINGS.

13% PEOPLE MOVED TO LESS INDEPENDENT SETTINGS (RESTRICTIVE).



THREE OF THE PEOPLE WHO MOVED TO LESS INDEPENDENT SETTINGS HAD MOVED TO A NURSING HOME.



4 IN 10 PEOPLE DID NOT WANT TO MOVE.



7 OUT OF 10 PEOPLE WERE NOT INCLUDED IN THE DECISION TO MOVE.



REASONS PEOPLE GAVE FOR MOVING?

Lateral
Restrictive
Community

